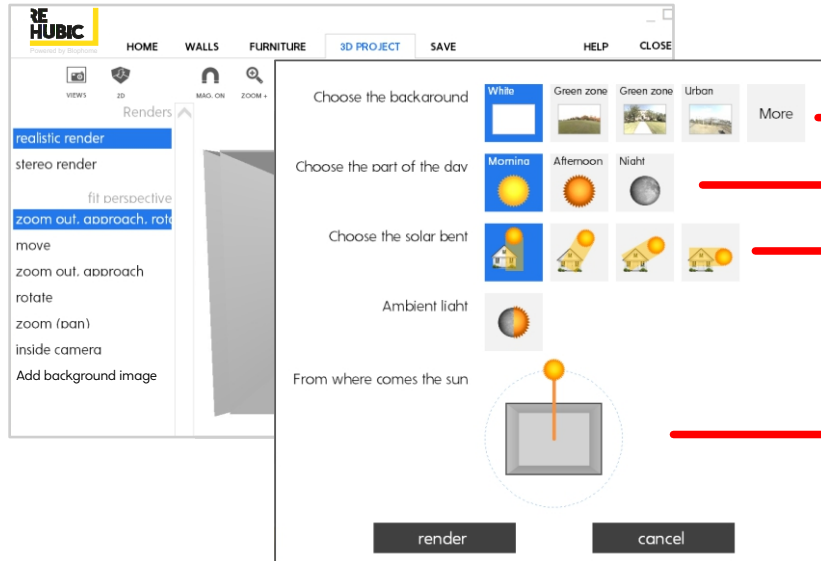


### Realistic Render



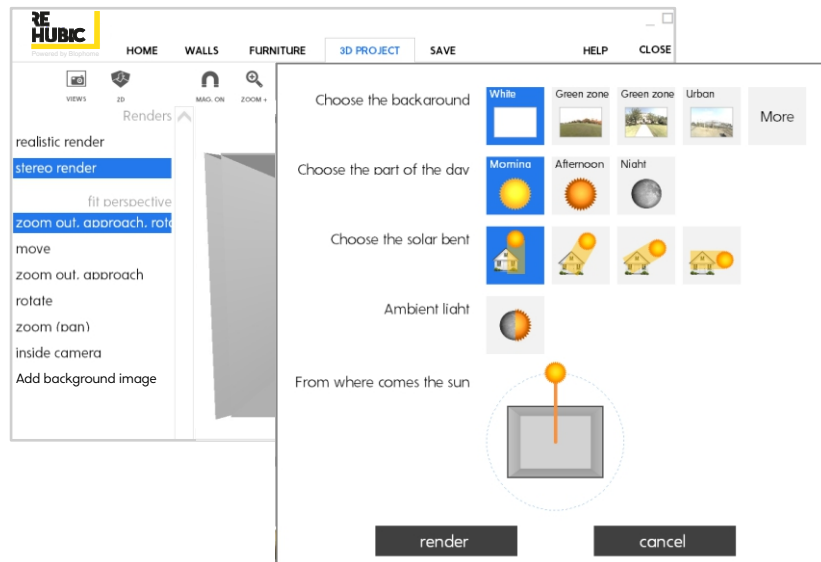
#### Realistic Render

Fund selection: click on background you want, you will find different types of environments, adding exterior light and landscape to project

Choose the part of the day: morning, afternoon or night

Choose the solar bent

Click on the sun and move the cursor around the room to set the direction of sunlight to your project



#### Stereo Render

##### STEREO (3D) GLASSES

If you have the necessary equipment, you can view photos in 3D like in the cinema.

If you have the drivers for JPS format and has a monitor, graphics card and glasses compatibles with this format you can generate stereo perspective and see the result in stereoscopic image..