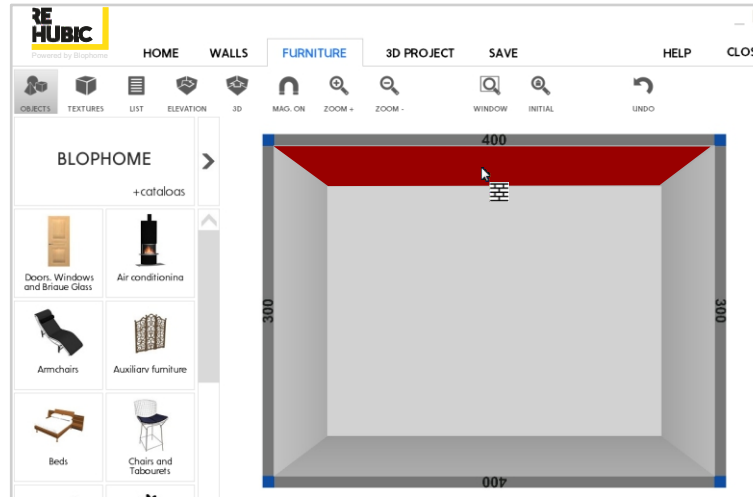
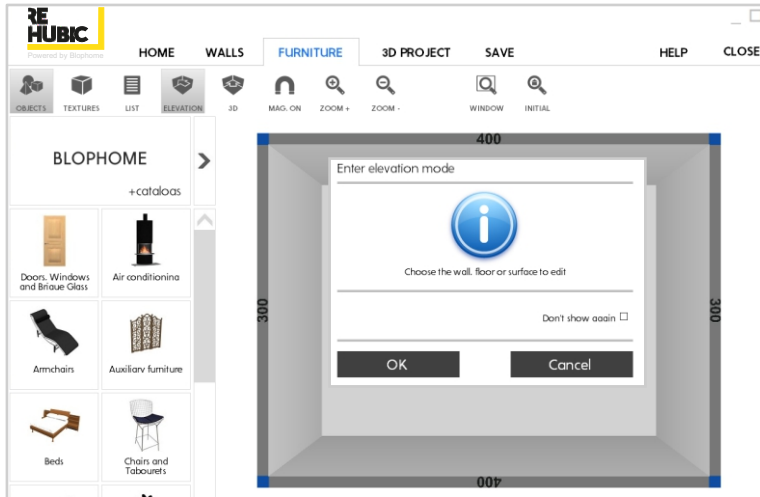
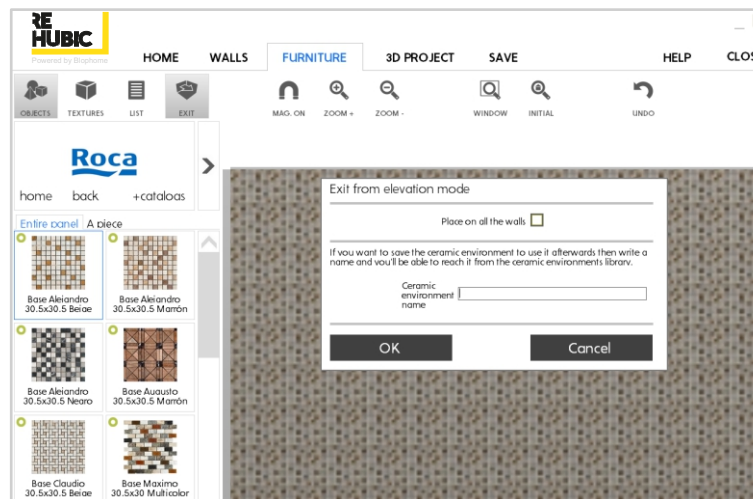
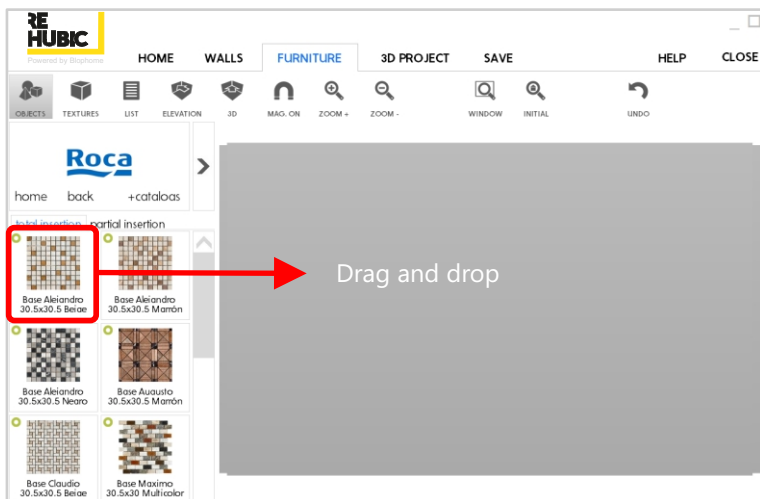


REHUBIC Help

Enter and Exit from Elevation Mode



Choose a wall on which ever side you want to be and see the elevation



The elevation is the best way of working with the ceramic catalogues

You can apply the ceramic environment to all the walls, if you want

You can also save the ceramic environment so that it can be used later on. State the name to access the ceramic environment object library

If you just want to cover one wall and not save the environment, click on Accept to leave the elevation work mode